

## Effect of Removal of Spermatogonial Stem Cells (SSCs) from *In Vitro* Culture on Gene Expression of Niche Factors in Bovine

Vahid Akbarinejad<sup>1,2</sup>, Parviz Tajik<sup>2\*</sup>, Mansoureh Movahedin<sup>3</sup>, and Reza Youssefi<sup>1,2</sup>

1. Department of Theriogenology, Faculty of Veterinary Medicine, University of Tehran, Tehran, Iran

2. Theriogenology Association, Faculty of Veterinary Medicine, University of Tehran, Tehran, Iran

3. Department of Anatomical Sciences, Faculty of Medical Sciences, Tarbiat Modares University, Tehran, Iran

### Abstract

**Background:** Niche cells, regulating Spermatogonial Stem Cells (SSCs) fate are believed to have a reciprocal communication with SSCs. The present study was conducted to evaluate the effect of SSC elimination on the gene expression of Glial cell line-Derived Neurotrophic Factor (GDNF), Fibroblast Growth Factor 2 (FGF2) and Kit Ligand (KITLG), which are the main growth factors regulating SSCs development and secreted by niche cells, primarily Sertoli cells.

**Methods:** Following isolation, bovine testicular cells were cultured for 12 days on extracellular matrix-coated plates. In the germ cell-removed group, the SSCs were removed from the *in vitro* culture using differential plating; however, in the control group, no intervention in the culture was performed. Colony formation of SSCs was evaluated using an inverted microscope. The gene expression of growth factors and spermatogonia markers were assessed using quantitative real time PCR.

**Results:** SSCs colonies were developed in the control group but they were rarely observed in the germ cell-removed group; moreover, the expression of spermatogonia markers was detected in the control group while it was not observed in the germ cell-removed group, substantiating the success of SSCs removal. The expression of *Gdnf* and *Fgf2* was greater in the germ cell-removed than control group ( $p < 0.05$ ), whereas the expression of *Kitlg* was lower in the germ cell-removed than control group ( $p < 0.05$ ).

**Conclusion:** In conclusion, the results revealed that niche cells respond to SSCs removal by upregulation of GDNF and FGF2, and downregulation of KITLG in order to stimulate self-renewal and arrest differentiation.

*Avicenna J Med Biotech* 2016; 8(3): 133-138

\* **Corresponding author:**  
Parviz Tajik, Ph.D., Faculty of Veterinary Medicine, University of Tehran, Tehran, Iran  
Tel/Fax: +98 21 61117001  
E-mail:  
ptajik@ut.ac.ir  
Received: 16 Nov 2015  
Accepted: 23 Jan 2016

**Keywords:** Bovine, Gene expression, Stem cells

### Introduction

Spermatogenesis is a complex and tightly-regulated process of cell proliferation and differentiation leading to production of mature spermatozoa from Spermatogonial Stem Cells (SSCs)<sup>1</sup>. The coordination of SSCs self-renewal and differentiation is regulated by growth factors produced by somatic cells surrounding SSCs, particularly Sertoli cells<sup>1</sup>. In this context, Glial cell line-Derived Neurotrophic Factor (GDNF), Fibroblast Growth Factor 2 (FGF2) and Kit Ligand (KITLG) are of the most important growth factors which have been identified to play pivotal role in regulation of SSCs development<sup>2-4</sup>. GDNF, a member of transforming growth factor  $\beta$  family, has been shown to contribute to SSCs self-renewal in different species of mammals including bovine<sup>2,5-9</sup>. FGF2 has also been indicated to stimulate germ cells proliferation and self-renewal<sup>3,7</sup>.

Conversely, KITLG has been found to play a pivotal role in SSCs differentiation<sup>4,10</sup>.

Extracellular Matrix (ECM) consisting of a complex network of macromolecules with structural and functional properties is the other part of niche<sup>11,12</sup>. The culture of cells on ECM provides an environment partly resembling the normal tissue, which allows to better study the mechanisms underlying the regulation of SSCs *in vitro*<sup>13-16</sup>.

The communication between stem cells and their niche is believed to be reciprocal, meaning that stem cells could also influence the function of niche, culminating in tissue homeostasis<sup>17</sup>. In this regard, it has been indicated that following testicular damage and the resultant germ cell elimination, self-renewal is favored over differentiation during the course of regeneration

of the germ cell population of seminiferous tubules in mice<sup>18</sup>. Although mechanisms underlying this tendency toward self-renewal are not completely understood, overexpression of GDNF<sup>19-21</sup> and insignificant decrease in the *Kitlg* mRNA expression<sup>22</sup> have been observed to follow elimination of germ cells from seminiferous tubules in mice. To our knowledge, however, whether the absence of SSCs could impact the expression of factors regulating SSCs development is not well-known in bovine. Indeed, studies assessing the changes in molecular behavior of niche cells following elimination of SSCs could help us expand our knowledge in terms of mechanisms whereby niche cells endeavor to repopulate the germ cells following testicular damage, which could further help develop therapies to replenish testicular germ cell in case of testicular injury and the subsequent germ cell depletion<sup>23</sup>. Furthermore, this knowledge could guide us to provide an optimal environment- in terms of growth factors- for *in vitro* culture of SSCs to augment self-renewal since one of the cornerstones for enhancing the efficiency of SSCs transplantation is the enrichment of the donor-derived testicular cell suspension prior to injection into the recipient seminiferous tubules due to the rarity of SSCs in mammalian testes<sup>24</sup>.

Accordingly, in the present research, the effect of SSCs removal from *in vitro* culture on the expression of *Gdnf*, *Fgf2* and *Kitlg*, as the main niche factors contributing to regulation of SSCs function<sup>2-4</sup> was assessed. ECM was chosen for *in vitro* culture to provide an environment partly akin to natural condition for testicular cells.

## Materials and Methods

### Animals and testicular biopsy

Animal Ethics Committee at University of Tehran approved the present study in terms of animal welfare and ethics. Testicular biopsies were obtained from Holstein calves (aged 3 to 5 months; n=3) as previously described<sup>17</sup>. Following testicular biopsy, the specimen was transferred on ice to the laboratory within 2 hr.

### Cell isolation

Cell isolation was implemented using a two-step enzymatic isolation procedure<sup>25</sup>. The testicular tissue was washed three times in DMEM containing antibiotics and was minced into small pieces by a sterile scissor. The minced testicular tissue was incubated in DMEM containing 1 mg/ml collagenase (Sigma-Aldrich, USA), 1 mg/ml hyaluronidase (Sigma-Aldrich, USA), 1 mg/ml trypsin (Sigma-Aldrich, USA) and 5 µg/ml DNase (Fermentas, Germany) at 37°C in a shaker incubator with 80 cycles per minute for approximately 60 min. The digested testicular tissue was washed three times with DMEM and the supernatant was disposed after each washing, leading to isolation of seminiferous tubules. During the second step of enzymatic digestion, the seminiferous tubules were incubated at 37°C in DMEM containing 1 mg/ml colla-

genase, 1 mg/ml hyaluronidase and 5 µg/ml DNase until disintegration of the seminiferous tubules and separation of the constituent cells. Individual cells were isolated from the remaining tubule fragments by centrifugation at 30 g for 2 min. Following filtration through 77 and 55 mm nylon filters, the cells were pelleted. The pellet was re-suspended in the DMEM containing antibiotics and 10% knock-out serum replacement (KSR, Gibco, USA).

### Cell culture

Six-well plates were coated with extracellular matrix (ECM) gel (Sigma-Aldrich, USA) as the manufacturer indicated. The ECM gel was prepared from Engelbreth-Holm-Swarm (EHS) mouse sarcoma and was composed of laminin as the major component, collagen type IV, heparan sulfate proteoglycan, entactin and other minor components. Cells were seeded at concentrations of 1,000,000 cells per well containing DMEM with antibiotics and 10% KSR. The plates were incubated at 37°C in a humidified atmosphere with 5% CO<sub>2</sub>. In the germ cell-removed group, the SSCs were removed from the *in vitro* culture using the differential plating method described by He *et al*, in which following 3 hr of incubation, somatic cells attached to the plate but SSCs had remained in the suspension and consequently were eliminated from the plate<sup>26</sup>. No intervention was performed in the control group. To further evaluate the effectiveness of the differential plating method for removal of SSCs, the gene expression of spermatogonial markers was assessed. In this context, *Thy1* and *Bcl6b* were used as the markers of undifferentiated spermatogonia<sup>27</sup> and *ckit* was used as a marker for differentiated spermatogonia<sup>28</sup>. The medium was replaced with a fresh one every three days in both groups.

### Evaluation of the colonization of SSCs

The colonization of SSCs in the control and germ cell-removed groups was assessed using an inverted microscope (IX71, Olympus, Japan).

### RNA isolation and quantitative real-time PCR (qRT-PCR)

Following trypsinization of the cultured cells (n=3 cell populations from different calves), the isolated cells were subjected to total RNA extraction using Trizol reagent (Fermentas, Germany). The extracted RNA was treated with DNase (Fermentas, Germany) to avoid DNA contamination. The concentration of RNA was determined using UV spectrophotometry (Eppendorf, Germany). The cDNAs were synthesized from 500 ng of RNA by oligo (dT) primers using Revert-Aid™ First Strand cDNA Synthesis Kit (Fermentas, Germany). Primers for genes of interest are presented in table 1. PCRs were performed using Master Mix and SYBR Green I (Fermentas, Germany) in an Applied Biosystems, StepOne™ thermal cycler (Applied Biosystems, USA). The PCR program started with an initial melting cycle for 5 min at 95°C to activate the polymerase, followed by 40 cycles of melting (30 s at

Table 1. Primer sequences used for qRT-PCR.

Gene	Forward primer (5'-3')	Reverse primer (5'-3')
$\beta$ -actin	TCG CCC GAG TCC ACA CAG	ACC TCA ACC CGC TCC CAA G
Thy1	TTC ATC TCC TTG TGA CGG GTT	GCA GAG GTG AGG GAA TGG C
Bcl6b <sup>a</sup>	AGG GCA CAG GGA ACT CTT TTC	CCT CCT TTG GCT TGA GTG TTTT
ckit	TAC CAA CCA AGG CAG ACA A	CTT TGA GGC AAG GAA CGC
Gdnf	GCA GCC GAA ACA ATG TAC GA	AAG GCG ATG GGT CTG CAA
Fgf2	AAA ACA GGA CCT GGG CAG AA	ATA TAC CTC TTC ATG TAA AAT GAG ATC AGA TG
Kitlg	GGT GGC AAA TCT TCC CAA AG	GTT GTT CCA CCA TCT CGC TTA TC

a: B-cell CLL/lymphoma 6, member B.

95°C), annealing (30 s at 58°C) and extension (30 s at 72°C). The quality of the PCR reactions was confirmed by melting curve analyses. For each sample, the reference gene ( $\beta$ -actin) and target gene were amplified in the same run. The target genes were normalized to the reference gene. The mean target gene threshold cycle (Ct) and mean exogenous control ( $\beta$ -actin) Ct for each sample were calculated from duplicate wells. The target gene threshold cycle (Ct) of the control was subtracted from the Ct of target gene, resulting in  $\Delta$ Ct. In each experiment, the Ct of time-point 0 sample was considered as the calibrator. Subsequently, the  $\Delta$ Ct of sample was then subtracted from the  $\Delta$ Ct of calibrator, resulting in  $\Delta\Delta$ Ct, which was used for calculation of the relative values of target gene expression for each sample<sup>29</sup>.

#### Statistical analysis

Data were analyzed using MIXED procedure. In addition, LSMEANS statement was used to perform multiple comparisons. All analyses were conducted in SAS<sup>30</sup>. Data are presented as mean  $\pm$  SD. Differences with  $p < 0.05$  were considered significant.

## Results

#### Colonization of SSCs

While SSCs colonies were developed in the control group (Figure 1A), they were rarely observed in the germ cell-removed group (Figure 1B) on day 12 of culture.

#### Gene expression

In the control group, the expression of *Thy1* did not differ among days of culture ( $p > 0.05$ ; Figure 2). In the germ cell-removed group, *Thy1* expression was not observed on days 6 and 12.

In the control group, the gene expression of *Bcl6b* was greater on days 6 ( $5.82 \pm 2.77$  fold) and 12 ( $6.11 \pm 2.84$  fold) compared with day 0 ( $p < 0.05$ ); however, it was not different between days 6 and 12 ( $p > 0.05$ ; Figure 2). The expression of *Bcl6b* was not observed in the germ cell-removed group on days 6 and 12.

The gene expression of *ckit* in the control group decreased 65% and 58% on days 6 and 12 of culture, respectively, as compared with day 0 ( $p < 0.05$ ), but it did not differ between days 6 and 12 ( $p > 0.05$ ; Figure 2). The expression of *ckit* was not observed in the germ cell-removed group.

In the control group, the expression of *Gdnf* did not change over the course of culture ( $p > 0.05$ ). In the germ

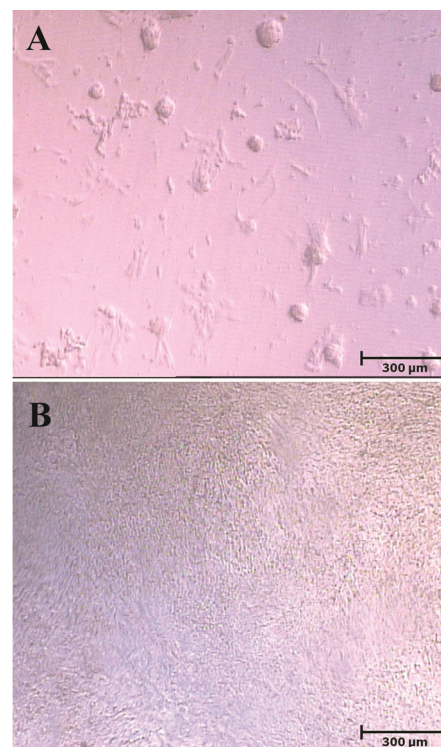


Figure 1. Colonization of SSCs in the control group; A) versus absence of colony formation in the germ-cell removed group; B) on day 12 of culture.

cell-removed group, it was greater on days 6 ( $3.51 \pm 0.72$ ) and 12 ( $4.14 \pm 0.65$ ) than day 0 ( $p < 0.01$ ), but it was not different between days 6 and 12 ( $p > 0.05$ ). The gene expression of *Gdnf* did not differ between two groups on day 6; however, it was higher in the germ cell-removed than control group on day 12 ( $p < 0.01$ ; Figure 3).

The expression of *Fgf2* was not different among days of culture in the control group ( $p > 0.05$ ). In the germ cell-removed group, it was higher on day 6 ( $3.72 \pm 1.09$  fold) than day 0 ( $p = 0.008$ ), but it did not differ between days 0 and 12, and between days 6 and 12 ( $p > 0.05$ ). On day 6, the expression of *Fgf2* in the germ cell-removed group was greater than that in the control group ( $p = 0.031$ ), but it did not differ between two groups on day 12 ( $p > 0.05$ ; Figure 4).

In the control group, the expression of *Kitlg* was higher on days 6 ( $8.11 \pm 3.14$  fold) and 12 ( $5.61 \pm 1.53$  fold) as compared with day 0 ( $p < 0.05$ ). In the germ



## Reciprocal Relationship of SSC and Niche

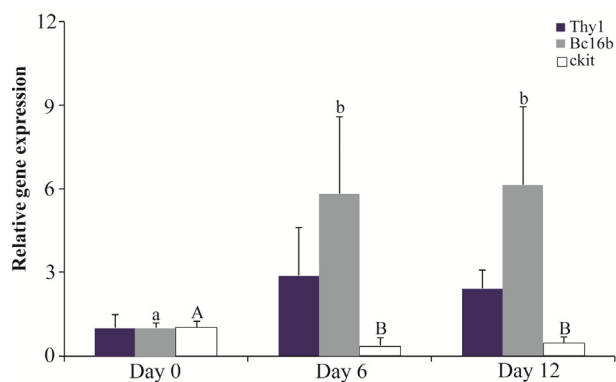


Figure 2. Relative gene expression of *Thy1*, *Bcl6b* and *ckit* in the control group (n=3) on days 0, 6 and 12. Different letters (a, b, A and B) indicate significant difference in the expression of the specified gene among timepoints ( $p < 0.05$ ).

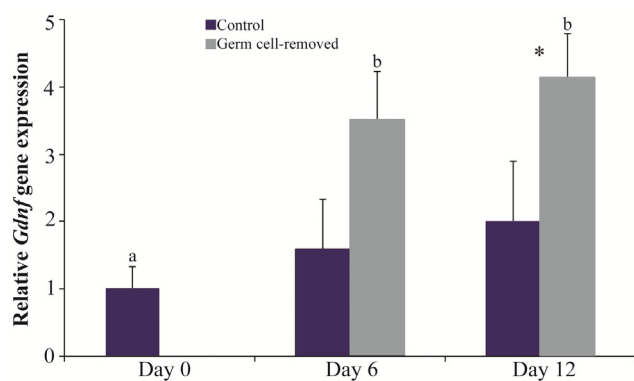


Figure 3. Relative gene expression of *Gdnf* in the control and germ cell-removed groups (n=3) on days 0, 6 and 12. Different letters (a and b) indicate significant difference within groups between different timepoints ( $p < 0.05$ ). Asterisk (\*) indicates significant difference between two experimental groups at the specified timepoint ( $p < 0.05$ ).

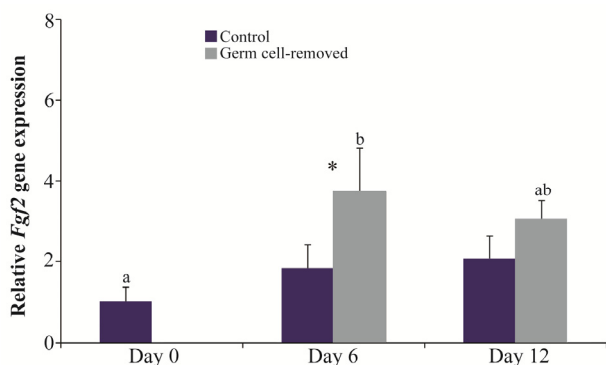


Figure 4. Relative gene expression of *Fgf2* in the control and germ cell-removed groups (n=3) on days 0, 6 and 12. Different letters (a and b) indicate significant difference within groups between different timepoints ( $p < 0.05$ ). Asterisk (\*) indicates significant difference between two experimental groups at the specified timepoint ( $p < 0.05$ ).

cell-removed group, however, it did not differ among days of culture ( $p > 0.05$ ). The gene expression of *Kitlg* was greater in the control than germ cell-removed group on days 6 and 12 ( $p < 0.01$ ; Figure 5).

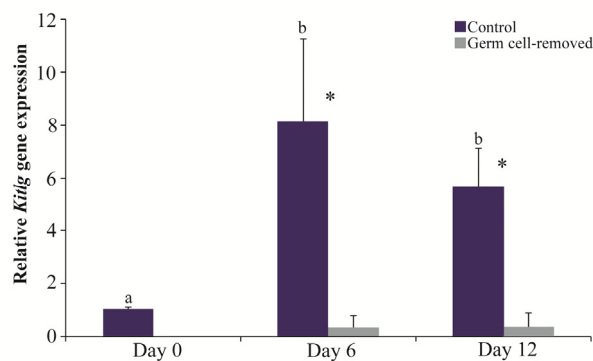


Figure 5. Relative gene expression of *Kitlg* in the control and germ cell-removed groups (n=3) on days 0, 6 and 12. Different letters (a and b) indicate significant difference within groups between different timepoints ( $p < 0.05$ ). Asterisks (\*) indicate significant difference between two experimental groups at the specified timepoint ( $p < 0.05$ ).

## Discussion

The present study was conducted to address whether SSCs removal could influence the molecular behavior of niche cells in terms of the expression of the main factors regulating SSCs development. SSCs colonies, resulting from the interactions between SSCs and Sertoli cells during *in vitro* culture<sup>8,9</sup>, were rarely developed in the germ cell-removed group. Likewise, gene expression of *Thy1*, *Bcl6b* and *ckit*, as markers of spermatogonia<sup>27,28</sup>, was not observed in the germ cell-removed group. Both of these findings indicate that SSC removal was successfully performed in the present study. Hence, the present study interestingly revealed that the expression of *Gdnf* increased during the culture in response to SSCs removal. Similarly, overexpression of GDNF and its mRNA has been reported following busulfan treatment, the drug which eliminates germ cells from seminiferous tubules in mice<sup>19-21</sup>. GDNF overexpression has been reported to stimulate self-renewal and block differentiation in murine SSCs<sup>2,31</sup>. On the other hand, mice lacking GDNF expression lose their undifferentiated spermatogonia with age, resulting in the presence of Sertoli cell only seminiferous tubules<sup>2</sup>. Johnston *et al* has also shown the essential role of GDNF in SSCs replication and differentiation by assessing the gene expression of *Gdnf* over different stages of spermatogenesis in rat<sup>6</sup>. The proliferative effect of GDNF on SSCs self-renewal has been substantiated by *in vitro* studies as well<sup>5,9</sup>.

In addition, SSCs removal led to elevation in the gene expression of *Fgf2*, while the expression of *Fgf2* was not affected over the course of culture in the control group. Similar to GDNF, contribution of FGF2 to SSCs self-renewal has been reported by *in vitro*<sup>7</sup> as well as *in vivo*<sup>3</sup> studies. FGF2 has also been suggested to have synergistic relationship with GDNF through upregulation of ETS variant 5 (*Etv5*), which positively impacts the expression of receptor tyrosine kinase *Ret*, mediating GDNF signals<sup>3</sup>.

Although the gene expression of *Kitlg* in the germ cell-removed group did not change over the course of culture, it was lower as compared with that in the control group, implicating that the removal of SSCs abrogated the elevation in expression of *Kitlg* in response to exposure to ECM<sup>17</sup>. Slight decrease in *Kitlg* mRNA expression has also been observed in mice treated with busulfan, albeit this reduction was not statistically significant<sup>22</sup>. In contrast with GDNF and FGF2, KITLG is believed to be involved in SSCs differentiation. It has been indicated that Steel locus encodes soluble and membrane-bound forms of KITLG in mice<sup>32</sup>. The membrane-bound domain of the Steel gene is deleted in Steel-dickie mutation<sup>33</sup>, culminating in lack of KITLG production in Steel/Steel<sup>dickie</sup> mice<sup>34</sup>. Steel/Steel<sup>dickie</sup> mice experience disrupted spermatogenesis and have testes with only primitive spermatogonia<sup>4,34</sup>. Transduction of Sertoli cells with adenoviral and lentiviral vectors carrying the mouse Steel gene has been found to restore spermatogenesis<sup>30,35</sup>. Furthermore, addition of recombinant KITLG to the tissue culture of testes obtained from Steel/Steel<sup>dickie</sup> mice would result in SSCs differentiation<sup>4</sup>.

Taken together, it seems that removal of SSCs in the present study resulted in alterations in niche factors expression toward stimulation of self-renewal and abrogation of differentiation, by elevation in gene expression of *Gdnf* and *Fgf2* as well as reduction in gene expression of *Kitlg*. Removal of SSCs from *in vitro* culture using differential plating partly resembles elimination of SSCs from seminiferous tubules by busulfan treatment<sup>18</sup>. During the regeneration of germ cell population following testicular damage caused by busulfan, self-renewal is favored over differentiation<sup>18</sup>. Hence, it could be surmised that somatic cells composing SSCs niche respond to SSCs elimination by upregulation of GDNF and FGF2 and downregulation of KITLG in order to repopulate niche by germ cells. Testicular dysfunction and germ cell depletion is common in male patients subjected to chemotherapy, which led to research to develop strategies to preserve the patient fertility<sup>23</sup>. One of these strategies has been hormonal therapy either for ameliorating the testicular damage during chemotherapy or for enhancing the recovery after treatment<sup>23</sup>. Data from the present study along with the finding of previous research<sup>18-22</sup> seem promising for potential application of the stimulatory or inhibitory effects of these growth factors to enhance the recovery of fertility in males with germ cell depletion due to testicular damage. Nevertheless, gene expression data in the present study requires to be initially confirmed using protein assays and then be trialed as treatment for recovery of fertility in males with testicular germ cell depletion.

In addition, these findings could be applied for enrichment of SSCs during *in vitro* culture prior to SSC transplantation in order to augment its efficiency<sup>24</sup>. Previously, the beneficial effects of GDNF and FGF2

have been reported for enhancement of SSCs self-renewal<sup>7,8</sup>. However, whether blockade of KITLG/cKIT pathway could accelerate the proliferatory effect of GDNF and FGF2 necessitates further studies to be addressed.

Considering the partly similar reaction of niche cells in response to either *in vitro* removal of SSCs using differential plating or *in vivo* elimination of SSCs using busulfan treatment<sup>19-22</sup>, it could be suggested that removal of SSCs presented in the current research could serve as a model to study the events ensuing testicular germ cell damage and the mechanisms involved in regeneration of testicular germ cells afterwards.

### Conclusion

In conclusion, the present study showed that removal of SSCs would lead to increase in gene expression of GDNF and FGF2 and decrease in gene expression of KITLG, implicating that absence or decrease in the number of SSCs alter the behavior of niche cells toward stimulation of self-renewal and abrogation of differentiation, probably in order to restore germ cell population. These finding could help develop therapies for acceleration of male fertility recovery after chemotherapy and improve *in vitro* condition for enhancement of self-renewal prior to SSCs transplantation. Moreover, the results imply that SSCs removal from *in vitro* culture might serve as a model to study changes in niche following damage to germ cell population of testicular tissue.

### Acknowledgement

The present study was supported by Theriogenology Association, Faculty of Veterinary Medicine, University of Tehran. The authors would like to thank Mr. S. Pour Beiranvand for his kind assistance in the present study.

### References

- Oatley JM, Brinster RL. Regulation of spermatogonial stem cell self-renewal in mammals. *Annu Rev Cell Dev Biol* 2008;24:263-286.
- Meng X, Lindahl M, Hyvönen ME, Parvinen M, de Rooij DG, Hess MW, et al. Regulation of cell fate decision of undifferentiated spermatogonia by GDNF. *Science* 2000;287(5457):1489-1493.
- Ishii K, Kanatsu-Shinohara M, Toyokuni S, Shinohara T. FGF2 mediates mouse spermatogonial stem cell self-renewal via upregulation of *Etv5* and *Bcl6b* through MAP2K1 activation. *Development* 2012;139(10):1734-1743.
- Sato T, Yokonishi T, Komeya M, Katagiri K, Kubota Y, Matoba S, et al. Testis tissue explantation cures spermatogenic failure in c-Kit ligand mutant mice. *Proc Natl Acad Sci USA* 2012;109(42):16934-16938.
- Hofmann MC, Braydich-Stolle L, Dym M. Isolation of male germ-line stem cells; influence of GDNF. *Dev Biol* 2005;279(1):114-124.

6. Johnston DS, Olivas E, DiCandeloro P, Wright WW. Stage-specific changes in GDNF expression by rat Sertoli cells: a possible regulator of the replication and differentiation of stem spermatogonia. *Biol Reprod* 2011; 85(4):763-769.
7. Kubota H, Avarbock MR, Brinster RL. Growth factors essential for self-renewal and expansion of mouse spermatogonial stem cells. *Proc Natl Acad Sci USA* 2004;101(47):16489-16494.
8. Aponte PM, Soda T, van de Kant HJ, de Rooij DG. Basic features of bovine spermatogonial culture and effects of glial cell line-derived neurotrophic factor. *Theriogenology* 2006;65(9):1828-1847.
9. Oatley JM, de Avila DM, Reeves JJ, McLean DJ. Testis tissue explant culture supports survival and proliferation of bovine spermatogonial stem cells. *Biol Reprod* 2004; 70(3):625-631.
10. Zhang L, Tang J, Haines CJ, Feng HL, Lai L, Teng X, et al. c-kit and its related genes in spermatogonial differentiation. *Spermatogenesis* 2011;1(3):186-194.
11. Hynes RO. The extracellular matrix: not just pretty fibrils. *Science* 2009;326(5957):1216-1219.
12. Watt FM, Huck WT. Role of the extracellular matrix in regulating stem cell fate. *Nat Rev Mol Cell Biol* 2013;14(8):467-473.
13. Abbott A. Cell culture: biology's new dimension. *Nature* 2003;424(6951):870-872.
14. Rosso F, Giordano A, Barbarisi M, Barbarisi A. From cell-ECM interactions to tissue engineering. *J Cell Physiol* 2004;199(2):174-180.
15. Zhang S. Beyond the petri dish. *Nat Biotechnol* 2004;22(2):151-152.
16. Akbarinejad V, Tajik P, Movahedin M, Youssefi R, Shafiei S, Mazaheri Z. Effect of extracellular matrix on bovine spermatogonial stem cells and gene expression of niche factors regulating their development in vitro. *Anim Reprod Sci* 2015;157:95-102.
17. Lane SW, Williams DA, Watt FM. Modulating the stem cell niche for tissue regeneration. *Nat Biotechnol* 2014; 32(8):795-803.
18. Nakagawa T, Sharma M, Nabeshima Y, Braun RE, Yoshida S. Functional hierarchy and reversibility within the murine spermatogenic stem cell compartment. *Science* 2010;328(5974):62-67.
19. Tadokoro Y, Yomogida K, Ohta H, Tohda A, Nishimune Y. Homeostatic regulation of germinal stem cell proliferation by the GDNF/FSH pathway. *Mech Dev* 2002;113(1):29-39.
20. Caires KC, de Avila J, McLean DJ. Endocrine regulation of spermatogonial stem cells in the seminiferous epithelium of adult mice. *Biores Open Access* 2012;1(5):222-230.
21. Zohni K, Zhang X, Tan SL, Chan P, Nagano MC. The efficiency of male fertility restoration is dependent on the recovery kinetics of spermatogonial stem cells after cytotoxic treatment with busulfan in mice. *Hum Reprod* 2012;27(1):44-53.
22. Choi YJ, Ok DW, Kwon DN, Chung JI, Kim HC, Yeo SM, et al. Murine male germ cell apoptosis induced by busulfan treatment correlates with loss of c-kit-expression in a Fas/FasL- and p53-independent manner. *FEBS Lett* 2004;575(1-3):41-51.
23. Howell SJ, Shalet SM. Testicular function following chemotherapy. *Hum Reprod Update* 2001;7(4):363-369.
24. Oatley JM. Spermatogonial stem cell biology in the bull: development of isolation, culture, and transplantation methodologies and their potential impacts on cattle production. *Soc Reprod Fertil Suppl* 2010;67:133-143.
25. Shafiei Sh, Tajik P, Ghasemzadeh-nava H, Movahedin M, Talebkhan Garoussi M, Qasemi-Panahi B, et al. Isolation of bovine spermatogonial cells and co-culture with prepubertal sertoli cells in the presence of colony stimulating factor-1. *Iran J Vet Med* 2013;7(2):83-90.
26. He Z, Kokkinaki M, Jiang J, Dobrinski I, Dym M. Isolation, characterization, and culture of human spermatogonia. *Biol Reprod* 2010;82(2):363-372.
27. Reding SC, Stepnoski AL, Cloninger EW, Oatley JM. THY1 is a conserved marker of undifferentiated spermatogonia in the pre-pubertal bull testis. *Reproduction* 2010;139(5):893-903.
28. Izadyar F, Den Ouden K, Creemers LB, Posthuma G, Parvinen M, De Rooij DG. Proliferation and differentiation of bovine type A spermatogonia during long-term culture. *Biol Reprod* 2003;68(1):272-281.
29. Livak KJ, Schmittgen TD. Analysis of relative gene expression data using real-time quantitative PCR and the 2(-Delta Delta C(T)) Method. *Methods* 2001;25(4):402-408.
30. Statistical Analysis Systems Institute. User's Guide Version 9.2: Statistics. SAS Institute, Cary NC, USA; 2008.
31. Yomogida K, Yagura Y, Tadokoro Y, Nishimune Y. Dramatic expansion of germinal stem cells by ectopically expressed human glial cell line-derived neurotrophic factor in mouse Sertoli cells. *Biol Reprod* 2003;69(4):1303-1307.
32. Zsebo KM, Williams DA, Geissler EN, Broudy VC, Martin FH, Atkins HL, et al. Stem cell factor is encoded at the Sl locus of the mouse and is the ligand for the c-kit tyrosine kinase receptor. *Cell* 1990;63(1):213-224.
33. Brannan CI, Lyman SD, Williams DE, Eisenman J, Anderson DM, Cosman D, et al. Steel-Dickie mutation encodes a c-kit ligand lacking transmembrane and cytoplasmic domains. *Proc Natl Acad Sci USA* 1991;88(11):4671-4674.
34. Kanatsu-Shinohara M, Ogura A, Ikegawa M, Inoue K, Ogonuki N, Tashiro K, et al. Adenovirus-mediated gene delivery and in vitro microinsemination produce offspring from infertile male mice. *Proc Natl Acad Sci USA* 2002;99(3):1383-1388.
35. Ikawa M, Tergaonkar V, Ogura A, Ogonuki N, Inoue K, Verma IM. Restoration of spermatogenesis by lentiviral gene transfer: offspring from infertile mice. *Proc Natl Acad Sci USA* 2002;99(11):7524-7529.