

## In Vitro Pre-validation of Gene Editing by CRISPR/Cas9 Ribonucleoprotein

Maryam Mehravar <sup>1</sup>, Abolfazl Shirazi <sup>1,2,3\*</sup>, Mohammad Mehdi Mehrazar <sup>1</sup>, Mahboobeh Nazari <sup>2\*</sup>

1. Reproductive Biotechnology Research Center, Avicenna Research Institute, ACECR, Tehran, Iran

2. Monoclonal Antibody Research Center, Avicenna Research Institute, ACECR, Tehran, Iran

3. Research Institute of Animal Embryo Technology, Shahrekord University, Shahrekord, Iran

### \* Corresponding authors:

Mahboobeh Nazari, Ph.D.,  
Monoclonal Antibody Research  
Center, Avicenna Research  
Institute, ACECR, Tehran, Iran

Abolfazl Shirazi, Ph.D.,  
Reproductive Biotechnology  
Research Center, Avicenna  
Research Institute, ACECR,  
Tehran, Iran

Tel: +98 21 22432020,  
+98 21 22404144

Fax: +98 21 22432021,  
+98 21 22404145

E-mail: Ma.nazari@ari.ir  
shiraziabbas@yahoo.com

Received: 11 Apr 2018

Accepted: 11 Jun 2018

### Abstract

**Background:** The CRISPR/Cas9 genome editing system is a powerful and simple gene editing method. The format of the CRISPR components is one of the important factors in targeting efficiency. Compared to plasmid or mRNA (IVTs) format, using the CRISPR/Cas9 system as Cas9–crRNA–tracrRNA RNP format is more efficient and rapid, especially in minimizing some of the pitfalls of CRISPR-mediated gene editing. In addition to efficient *in vivo* applications of the CRISPR RNP format in a variety of cell types and organisms, another advantage of this approach is usability for *in vitro* applications in which the crRNAs in the tracrRNA–crRNA structure guides the Mg<sup>2+</sup>-dependent RNAdirected DNA endonuclease to introduce double-strand breaks at specific sites in DNA.

**Methods:** Here, Cas9–crRNA–tracrRNA RNP system was used to test the designed crRNAs for *in vitro* DNA cleavage by Cas9 protein in RAG1, RAG2 and IL2RG genes.

**Results:** The results of cleavage reveal the Cas9–crRNA–tracrRNA RNP system is a rapid and efficient way to pre-validate the efficiency of CRISPR cleavage with crRNAs designed for RAG1, RAG2 and IL2RG genes.

**Conclusion:** one step *in vitro* cleavage of DNA by CRISPR/Cas9 ribonucleoprotein complex can be used to pre-validate the functionality and relative efficiency of CRISPR system for targeting genes.

Avicenna J Med Biotech 2019; 11(3): 259-263

**Keywords:** CRISPR/Cas9, *In vitro* digestion, Ribonucleoprotein

### Introduction

Targeted genome editing through site-specific endonucleases have been developed in recent years. Genome editing technologies based on endonucleases like Zinc Finger Nuclease (ZFN) and Transcription Activator-Like Effector Nuclease (TALEN) have been used for targeted genome modifications <sup>1-3</sup>. These proteins are rather complex to design, need to be assembled for each target sequence <sup>4,5</sup> and the process for protein engineering can be complicated and time consuming.

Recently, the Clustered Regularly Interspaced Short Palindromic Repeats (CRISPR) system associated to the Cas9 endonuclease (CRISPR/Cas9) has been developed as a specific and effective tool for genome engineering. It is inexpensive and easy to carry out <sup>6-8</sup>.

CRISPR/Cas9 system consists of a *Streptococcus pyogenes* (*S. pyogenes*) derived Cas9 nuclease and a RNA duplex made of a CRISPR RNA (*crRNA*) and a trans-activating *crRNA* (*tracrRNA*) <sup>9</sup> that would be replaced by a synthetic single guide RNA (sgRNA) chimera that mimics the *crRNA*: *tracrRNA* duplex <sup>10</sup>.

This system is based on the base-pairing of the DNA sequence, adjacent to an obligate Protospacer

Adjacent Motif (PAM) NGG, with a short complementary RNA sequence which is then cleaved by the Cas9 protein sequence-specific manner <sup>8,11,12</sup>. Double Strand Breaks (DSBs) induced by this system can be repaired in one of the two ways: Non-Homologous End Joining (NHEJ) or Homology-Directed Repair (HDR) and introducing two sgRNAs along with Cas9 may result in deletions <sup>13</sup>.

Cas9 is a large protein with two nuclease domains, RuvC-like domain near the N-terminus and a HNH (His-Asn-His)-like domain is in the middle of the protein. The Cas9 HNH domain cleaves the complementary DNA strand, while the RuvC-like domain cleaves the non-complementary DNA strand <sup>10,14</sup>.

The crRNA consists of the 16-22 nucleotides deriving from 3' end of the repeat sequence and 20 nucleotides complementary to the DNA strand of protospacer (target site), which guides Cas9 to the DNA target <sup>14</sup>. The tracrRNA is partially complementary to crRNA and required for crRNA maturation and DNA cleavage by Cas9 <sup>9,10,14</sup>. For specific DNA cleavage by Cas9 protein, two conditions are required; firstly, a short nu-

cleotide sequence 5'-NGG-3', called a PAM (Protospacer-adjacent motif) that is located in the vicinity of a protospacer and secondly, binding to the target site (a protospacer) complementary to the crRNA. DNA cleavage in protospacer introduced by the Cas9 protein of *S. pyogenes* occurs 3 nt away from the PAM sequence<sup>10,14</sup>. The RNA-guided Cas9 nuclease from *S. pyogenes* (Cas9sp) is widely used to introduce *in vivo* genetic alterations in a variety of cells and organisms including bacteria, yeast, monkeys and human cell lines<sup>15</sup>.

CRISPR/Cas9 can be introduced as DNA plasmid, *In Vitro* Transcriptions (IVTs) or as Ribonucleoprotein (RNP) format in which the recombinant Cas9 protein is assembled *in vitro* with chemically synthesized sgRNA or crRNA: tracrRNA duplex. Guide RNAs generated by IVT or chemical synthesis for RNP system completely bypass cloning process and allow generation and validation of a CRISPR reagent faster. Also, above formats except RNP can not be applicable *in vitro* and require to be delivered into cultured cells that involve time-consuming cell culture and transfection steps<sup>16</sup>.

CRISPR/Cas9 system as a programmable molecular tool can be widely used for *in vitro* applications<sup>17,18</sup>.

In previous methods, crRNA and tracrRNA have been oftenly used as single guide RNA (sgRNA) that were artificially made by humans in which a linker was added between the two crRNA and tracrRNA pieces to make them one single RNA. Recently, in RNP complex, a group of scientists have designed a new approach to use CRISPR, called the innovative Alt-R CRISPR- Cas9 System that is based on the natural *S. pyogenes* CRISPR RNA system and utilizes the optimized crRNAs and tracrRNAs that were shortened to 36 and 67 nucleotides, respectively. This system improves the potential of genome editing, saves time by utilizing ready-to-use RNA reagents, and reduces cell toxicity by avoiding activation of cellular innate immune responses (www.idtdna.com/CRISPR-Cas9).

RNPs are the most rapid, transient, convenient and efficient format of using *CRISPR/Cas9* gene editing<sup>19</sup>. Also, by using this method, researchers could be able to minimize some of the pitfalls of CRISPR-mediated gene editing such as mosaicism and off-target effects<sup>20-22</sup>.

Cas9 RNP complex is not limited by the amount and rate of Cas9 translation, and pre-loaded sgRNAs are likely to be protected from degradation<sup>22</sup>. In addition to efficient *in vivo* applications of CRISPR RNP, this method can be applicable for the *in vitro* applications unlike the former plasmid-based approach and IVT method. Therefore, to pre-validate CRISPR/Cas9 RNP complex for genome editing in various organisms, there is no need to test the system first in respective cell lines and only an *in vitro* cleavage assay is enough for this purpose.

As the plasmid-based approach for CRISPR-mediated genome editing of *RAG1* and *RAG2* genes in the mouse Embryonic Stem Cells (mESCs) and mouse

zygote was used in our previous work, first, an attempt was made to test the system in the NIH3T3 cell lines (Mouse embryonic fibroblast cells). This process is time-consuming and requires preparation of steps such as cell culture, transfection, selection, DNA isolation, PCR and T7 endonuclease1 assay for the cleavage analysis.

In order to test the functionality and relative efficiency of CRISPR RNP system, *in vitro* cleavage of DNA was carried out in one step by CRISPR/Cas9 ribonucleoprotein complex.

The crRNAs that show activity were selected for CRISPR-mediated gene targeting of the mouse ESCs and zygote. Obligatory components of Cas9 RNP system were provided to cleave specific target sites of *RAG1*, *RAG2* and *IL2RG* genes that are involved in immune system functions. The components included the Mg<sup>2+</sup>-dependent RNA-directed DNA endonuclease (Recombinant Cas9 protein), crRNA with a specific sequence complementary to the protospacer, tracrRNA, the fragment of each gene with a specific protospacer sequence and a PAM (Figure 1).

## Materials and Methods

### Target selection

The 20-nt target sites that are complementary to the 5' end of the crRNA on each gene were selected using online CRISPR RGEN Tools program (<https://www.rgenome.net>) based on specificity rules, including uniqueness of the selected sites throughout the genome, 5'-G-N<sub>19</sub>-NGG-3' matching and selection of target sequences in coding region nearby gene promoter, because target sites near the 5' end of Coding DNA Sequence (CDS) are more efficient as they produce early frame shifts and stop codons<sup>23</sup>.

### *In vitro* assembly of a Cas9 ribonucleoprotein complex

To assemble CRISPR RNP complex, duplex RNA (crRNA: tracrRNA) was prepared by annealing crRNA to tracrRNA. For annealing, 5 µg of crRNA (5 µl of 1 µg/µl) and 10 µg of tracrRNA (10 µl of 1 µg/µl) for each gene were mixed and annealed in a thermocycler by heating to 95°C for 5 min and cooling to 25°C. To form RNP complex, an incubation step is required either before *in vitro* cleavage assay or during incubation time of cleavage assay. In this experiment, RNP complexes were formed in one step as described in the following section. But for the experiments of CRISPR-

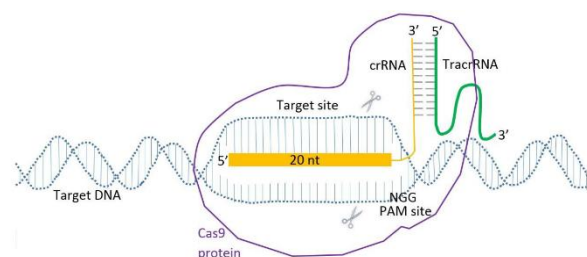


Figure 1. Alt-RcrRNA: tracrRNA-Cas9 RNP gene targeting.

Table 1. Primers used to amplify fragments of *RAG1*, *RAG2* and *IL2RG* genes

Primer names	Sequence 5' to 3'
<i>RAG1</i> -primer F	GAAGAAGCACAGAAGGAGAAG
<i>RAG1</i> -primer R	ATCGGCAAGAGGGACAATAGC
<i>RAG2</i> -primer F	ATTCTCTCTGGCAAGACT
<i>RAG2</i> -primer R	GCATACACTCTGACAAGCA
<i>IL2RG</i> -primer F	TGACACAGACTACACCCAGAG
<i>IL2RG</i> -primer R	TCAGCCCTTTAGACACACCAC

mediated gene targeting in cell lines or zygote, the RNP complex was first formed *in vitro* and then delivered into cells.

#### DNA cleavage by *in vitro* assembled Cas9 RNP complex

The DNA cleavage activity was assayed on PCR products of *RAG1*, *RAG2* and *IL2RG* genes that had been amplified by a pair of PCR primers for each gene (Table 1) and containing target site and PAM sequences. As mentioned, RNP complexes were formed during cleavage reaction by mixing crRNA: tracrRNA with *Alt-R S. pyogenes* Cas9 Nuclease 3NLS activated in 10X Cas9 nuclease reaction buffer (NaCl 1 M, MgCl<sub>2</sub> 0.1 M, tris-HCL 0.5 M, BSA 1 mg/ml, pH= 7.9). All components were ordered from Integrated DNA Technologies (IDT).

The cleavage reaction (30  $\mu$ l) was performed by mixing the following components: 1  $\mu$ l duplex RNA (1  $\mu$ g/ $\mu$ l), 3  $\mu$ l 10X Cas9 nuclease reaction buffer, 3  $\mu$ l Cas9 enzyme (200 ng/ $\mu$ l), ddH<sub>2</sub>O (To final volume 29  $\mu$ l) and 1  $\mu$ l respective PCR product for each gene (100 nM). Then, the mixtures were incubated at 37°C for 2 hr. The reactions without adding duplex RNA were considered negative controls for each duplex RNA. After incubation, 1  $\mu$ l Proteinase K (20 mg/ml) was added to the reaction and then the mixture incubated at 65°C for 10 min to release the DNA from the Cas9 endonuclease. When both crRNAs were active on *RAG2* and *IL2RG* genes, to test the activity of both crRNAs, the corresponding reaction was performed.

The products of each reaction were assessed by electrophoresis on 2% agarose gel. The results of cleaving *RAG1* and *RAG2* genes were compared to the results of our previous work when plasmid-based CRISPR-mediated gene targeting was used.

## Results

#### crRNA selection

Target sequences that are complementary to the 5' end of the crRNAs were designed based on rules mentioned in materials and methods. Finally, target sequences in coding regions of *RAG1*, *RAG2* and *IL2RG* genes were selected so that one sequence was targeted in *RAG1* gene and two sequences were targeted in each of *RAG2* and *IL2RG* genes. According to target selection, the crRNAs were ordered from IDT (www.idtdna.com/CRISPR-Cas9) in their proprietary Alt-R format (Table 2).

Table 2. crRNA sequences

SgRNA names	Sequence 5' to 3'
<i>RAG1</i>	CGCGAGACGGGACCGTCGCA
<i>RAG2-1</i>	GAATGGCCGTATCTGGGTTC
<i>RAG2-2</i>	TGCTTTTCCCTCGACTATAC
<i>IL2RG-1</i>	ATCTGATAATAATACATTCC
<i>IL2RG2</i>	TTCTGTACAGCTCGCCTCTG

#### Targeted cleavage of *RAG1*, *RAG2*, *IL2RG* genes *in vitro*

The *in vitro* digestion of three genes was analyzed by agarose gel electrophoresis. The results show that crRNA *RAG1*, crRNA *RAG2-1* and crRNA *RAG2-2* are active and crRNA-guided Cas9 specifically cleaves target DNA sequences of *RAG1* and *RAG2* gene fragments. Only one crRNA *IL2RG* (*IL2RG-1*) had activity, thus crRNA *IL2RG-2* was not appropriate to use for CRISPR gene targeting of mouse genome (Figure 2A). The results of *in vitro* digestion of *RAG1* and *RAG2* gene fragments by Cas9 guided by crRNA *RAG1*, crRNA *RAG2-1* and crRNA *RAG2-2* were consistent with the results of plasmid-based CRISPR gene targeting of NIH3T3 cells for *RAG1* and *RAG2* sgRNA in our previous work (submitted to AJMB). But compared to the plasmid-based method, it can be used very simply and quickly, so that the approximate duration of the plasmid method lasts about two weeks, while in this method the whole procedure can be done in one day.

## Discussion

Therefore, *in vitro* digestion of targeted genes by CRISPR/Cas9 gene editing in RNP format can be a simple and rapid method for pre-validation of CRISPR/Cas9 system before using in the cell types and organisms without the need to deliver CRISPR components into cells. But the point that may not be a drawback for RNP complex is that the shelf life of the chemically synthetic crRNA and tracrRNA in the best condition is 6 months and after this time CRISPR components do not work efficiently; likewise, this system was used after 6 months and the results showed the system did not work efficiently (Figure 2B).

## Conclusion

In conclusion, one step *in vitro* cleavage of DNA by CRISPR/Cas9 ribonucleoprotein complex can be used to pre-validate the functionality and relative efficiency of CRISPR system for targeting *RAG1*, *RAG2* and *IL2RG* mouse genes. Although the shelf life of the RNP components is limited but to test the validation of CRISPR/Cas9 system, plasmid-based approach compared to the RNP system is much more time consuming and laborious.

#### Acknowledgement

This research project has been supported by the Iran national science foundation in project No. 93006173 and the Avicenna Research Institute.

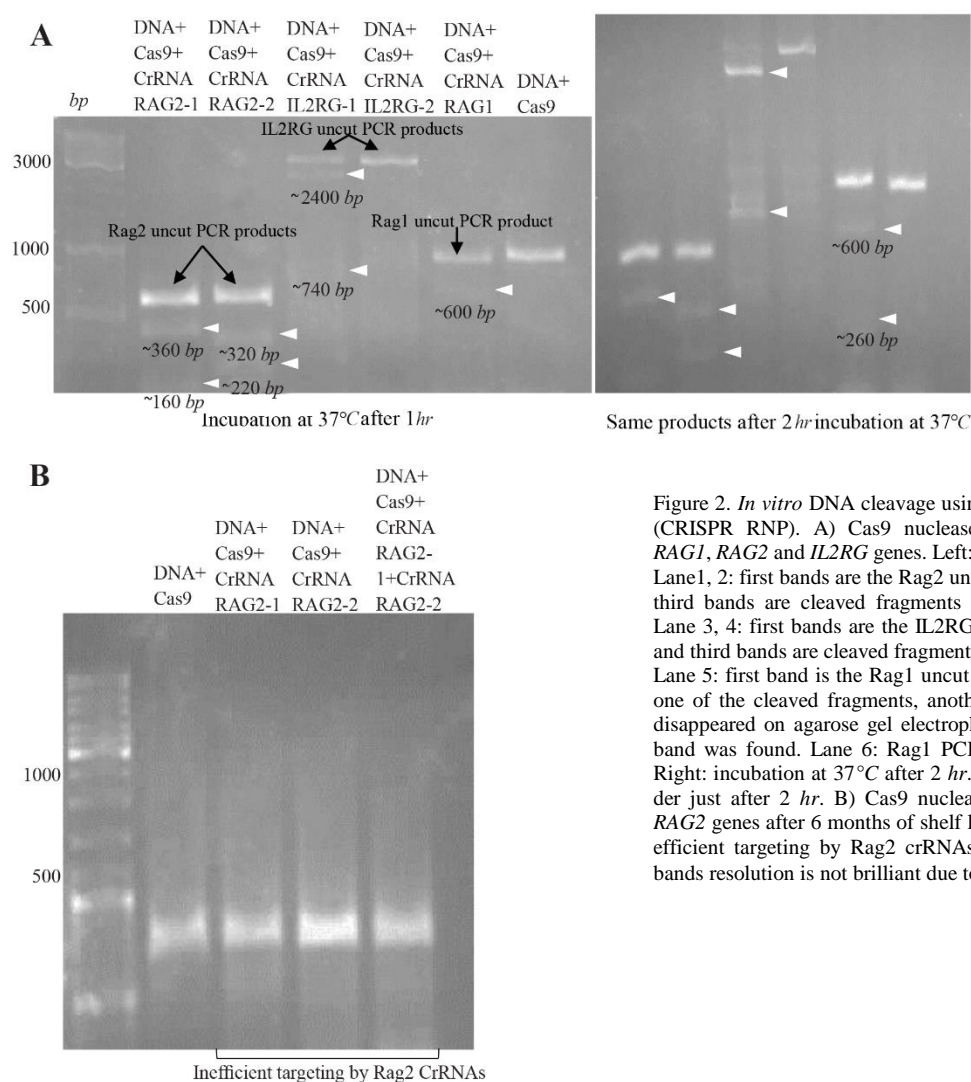


Figure 2. *In vitro* DNA cleavage using Cas9 nuclease and crRNAs (CRISPR RNP). A) Cas9 nuclease and crRNAs for targeting *RAG1*, *RAG2* and *IL2RG* genes. Left: incubation at 37°C after 1 hr. Lane 1, 2: first bands are the Rag2 uncut PCR products, second and third bands are cleaved fragments represented by white arrows. Lane 3, 4: first bands are the IL2RG uncut PCR products, second and third bands are cleaved fragments represented by white arrows. Lane 5: first band is the Rag1 uncut PCR product, second band is one of the cleaved fragments, another cleaved fragment of Rag1 disappeared on agarose gel electrophoresis but after 2 hr, a faint band was found. Lane 6: Rag1 PCR product as a DNA control. Right: incubation at 37°C after 2 hr. The lanes are in the same order just after 2 hr. B) Cas9 nuclease and crRNAs for targeting *RAG2* genes after 6 months of shelf life. Very faint bands show inefficient targeting by Rag2 crRNAs. In all agarose gel pictures, bands resolution is not brilliant due to low quality of GelRed.

## References

- Zhang F, Maeder ML, Unger-Wallace E, Hoshaw JP, Reyon D, Christian M, et al. High frequency targeted mutagenesis in *Arabidopsis thaliana* using zinc finger nucleases. *Proc Natl Acad Sci USA* 2010;107(26):12028-12033.
- Zhang F, Cong L, Lodato S, Kosuri S, Church GM, Arlotta P. Efficient construction of sequence-specific TAL effectors for modulating mammalian transcription. *Nat Biotechnol* 2011;29(2):149-153.
- Briggs AW, Rios X, Chari R, Yang L, Zhang F, Mali P, et al. Iterative capped assembly: rapid and scalable synthesis of repeat-module DNA such as TAL effectors from individual monomers. *Nucleic Acids Res* 2012;40(15):e117-e117.
- Carroll D, Morton JJ, Beumer KJ, Segal DJ. Design, construction and in vitro testing of zinc finger nucleases. *Nat Protoc* 2006;1(3):1329-1341.
- Sanjana NE, Cong L, Zhou Y, Cunniff MM, Feng G, Zhang F. A transcription activator-like effector toolbox for genome engineering. *Nature Protocols* 2012;7(1):171.
- Pennisi E. The CRISPR craze. *Science* 2013;341(6148):833-836.
- Cong L, Ran FA, Cox D, Lin S, Barretto R, Habib N, et al. Multiplex genome engineering using CRISPR/Cas systems. *Science*. 2013;339(6121):819-823.
- Mali P, Yang L, Esvelt KM, Aach J, Guell M, DiCarlo JE, et al. RNA-guided human genome engineering via Cas9. *Science* 2013;339(6121):823-826.
- Deltcheva E, Chylinski K, Sharma CM, Gonzales K, Chao Y, Pirzada ZA, et al. CRISPR RNA maturation by trans-encoded small RNA and host factor RNase III. *Nature* 2011;471(7340):602-607.
- Jinek M, Chylinski K, Fonfara I, Hauer M, Doudna JA, Charpentier E. A programmable dual-RNA-guided DNA endonuclease in adaptive bacterial immunity. *Science* 2012;337(6096):816-821.
- Baker M. Gene editing at CRISPR speed. *Nat Biotechnol* 2014;32(4):309-312.
- Jore MM, Lundgren M, van Duijn E, Bultema JB, Westra ER, Waghmare SP, et al. Structural basis for CRISPR RNA-guided DNA recognition by Cascade. *Nat Struct Mol Biol* 2011;18(5):529-536.



13. Lin S, Staahl BT, Alla RK, Doudna JA. Enhanced homology-directed human genome engineering by controlled timing of CRISPR/Cas9 delivery. *Elife* 2014;3:e04766.
14. Gasiunas G, Barrangou R, Horvath P, Siksnys V. Cas9–crRNA ribonucleoprotein complex mediates specific DNA cleavage for adaptive immunity in bacteria. *Proc Natl Acad Sci USA* 2012;109(39):E2579-E2586.
15. Marraffini LA. The CRISPR-Cas system of *Streptococcus pyogenes*: function and applications. 2016 Apr 7. In: Ferretti JJ, Stevens DL, Fischetti VA, editors. *Streptococcus pyogenes: Basic Biology to Clinical Manifestations* [Internet]. Oklahoma City (OK): University of Oklahoma Health Sciences Center; 2016. Available from: <https://www.ncbi.nlm.nih.gov/books/NBK355562>.
16. Kouranova E, Forbes K, Zhao G, Warren J, Bartels A, Wu Y, et al. CRISPRs for optimal targeting: Delivery of CRISPR components as DNA, RNA, and protein into cultured cells and single-cell embryos. *Human Gene Ther* 2016;27(6):464-475.
17. Karvelis T, Gasiunas G, Siksnys V. Programmable DNA cleavage in vitro by Cas9. *Biochem Soc Trans* 2013;41(6):1401-1406.
18. Liu Y, Tao W, Wen S, Li Z, Yang A, Deng Z, et al. In vitro CRISPR/Cas9 system for efficient targeted DNA editing. *MBio* 2015;6(6):e01714-01715.
19. Hendel A, Bak RO, Clark JT, Kennedy AB, Ryan DE, Roy S, et al. Chemically modified guide RNAs enhance CRISPR-Cas genome editing in human primary cells. *Nat Biotechnol* 2015;33(9):985-989.
20. Sung YH, Kim JM, Kim HT, Lee J, Jeon J, Jin Y, et al. Highly efficient gene knockout in mice and zebrafish with RNA-guided endonucleases. *Genome Res* 2014;24(1):125-131.
21. Aida T, Chiyo K, Usami T, Ishikubo H, Imahashi R, Wada Y, et al. Cloning-free CRISPR/Cas system facilitates functional cassette knock-in in mice. *Genome Biol* 2015;16(1):87.
22. Burger A, Lindsay H, Felker A, Hess C, Anders C, Chia-vacci E, et al. Maximizing mutagenesis with solubilized CRISPR-Cas9 ribonucleoprotein complexes. *Development* 2016;143(11):2025-2037.
23. Graham DB, Root DE. Resources for the design of CRISPR gene editing experiments. *Genome Biol* 2015;16(1):260.